

OUR SERVICE PORTFOLIO FOR
TIMBER CONSTRUCTION PLANNING



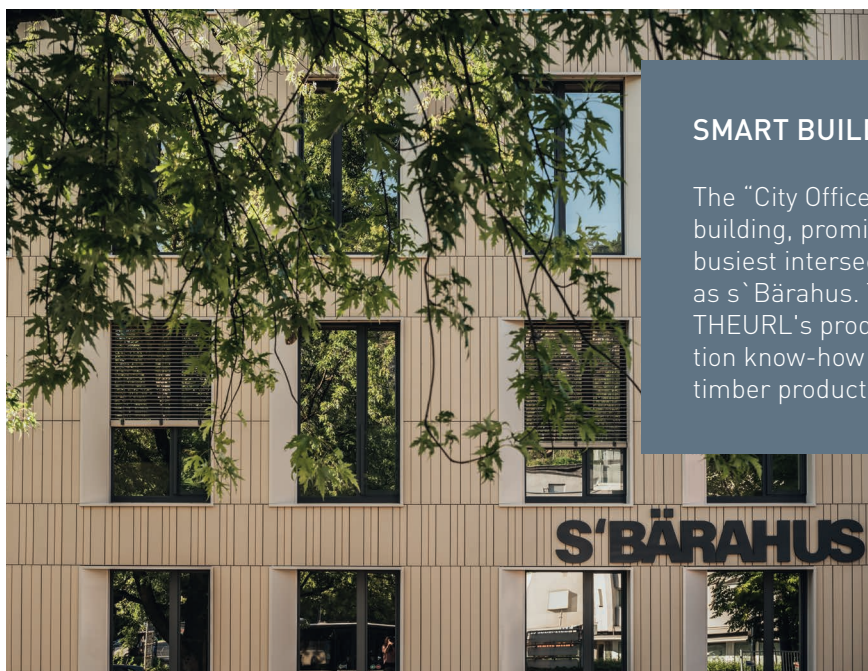
WE PLAN AND PRODUCE CONSTRUCTIVELY

How do we achieve resource-efficient execution planning for glue laminated timber and CLTPLUS? To ensure projects run smoothly, fine-tuning between architecture, structural planning, timber construction and our experienced technical timber construction team is crucial in the early stages of project.

As your industrial partner, we would be happy to assist you while working together to achieve perfect integration of all planning processes. This allows your timber construction project to benefit from the latest production technologies. The future belongs to timber construction and THEURL's service portfolio really helps projects to achieve success.

THIS COLLABORATION OFFERS CLEAR BENEFITS

- + Efficient planning steps
- + Waste-optimised project development
- + Time savings
- + Cost reductions
- + Expertise shortens the planning process
- + Reduction of sources of error



SMART BUILDING WITH WOOD

The "City Office" is a new, seven-story office building, prominently located at Vorarlberg's busiest intersection and known colloquially as s`Bärahus. The project relied heavily on THEURL's production and timber construction know-how as well as the solid, structural timber products themselves.



THE LEVEL OF COMPLETION OF YOUR PROJECT IS A...

01

APPROVAL PLAN (2D)

Our options

- + Offer according to Service Package 1
- + Offer according to Service Package 2
- + Offer according to Service Package 3

02

3D PLAN

Our options

- + Offer according to Service Package 2
- + Offer according to Service Package 3

03

EXECUTION PLAN

Our options

- + Definition of lifting equipment
- + Evaluation of defined joinery details
- + Feasibility check
- + Elementing, waste optimisation

WE PLAN DOWN TO THE SMALLEST DETAIL

At what stage is your project planning in? Based on your submitted project data, we can define the planning progress and create an offer from our service portfolio.



OUR SERVICE PORTFOLIO FOR TIMBER CONSTRUCTION PLANNING

A few steps are necessary for error-free execution planning. We offer a service portfolio with three different levels of performance. Of course, we can take on a complete project development upon request. We would be happy to prepare an offer for our technical services.

SERVICE PACKAGE 1

Mass determination

- + Mass determination according to plan
- + First offer creation with gross volume, standard volume according to area and delivery costs

SERVICE PACKAGE 2

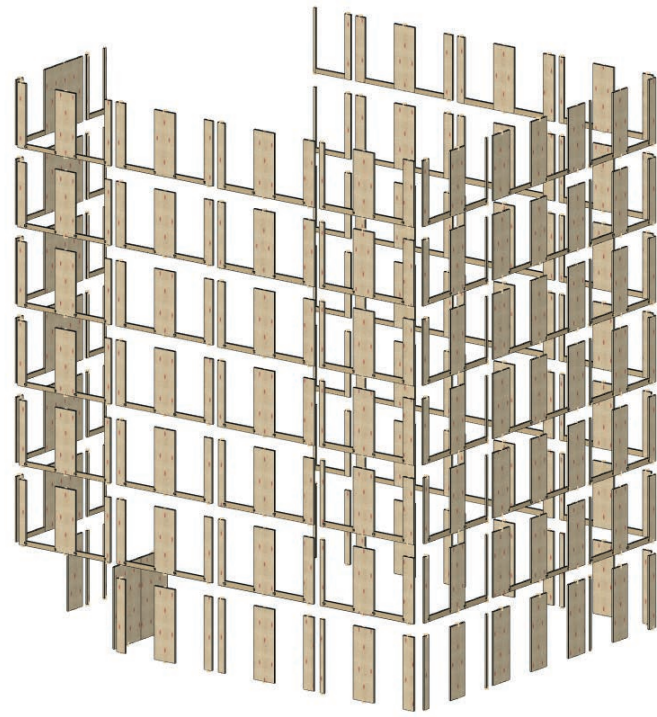
3D project development with area optimisation

- + 3D mass determination with areas and waste optimisation, nesting in advance
- + Classification of components
- + Project is drawn from 2D to 3D
- + Standard composite components
- + Definition of the lifting equipment and required processing
- + Clarification of all special processing, if available or defined in the plan

SERVICE PACKAGE 3

3D project development with cross-section optimisation

- + All services of package 2
- + Review of optimisation proposals for the static cross sections (preliminary design), final review by a structural engineer required
- + Detailed suggestions for static fasteners according to individual requirements



STEP-BY-STEP

From this point onwards, work preparation for the production lines begins internally.

04

ORDERING

In orders, production capacities are reserved based on the existing planning status and the exact delivery date is set. Our digital customer portal is available for you to track the project status at any time. Our TIM application also enables secure and uniform data exchange for plans and all documents.



Learn more about
TIM THEURL INFORMATION MANAGER.



THE PROJECT PROCESS AT A GLANCE

FROM PLANNING TO SITE DELIVERY

The elements are prefabricated to millimetre precision in our factory and delivered to the construction site. Before the project goes into work preparation and production begins, an error-free work plan for the production of the individual elements is required.

05

JOINERY PLANNING

Based on the four common CAD programs SEMA, Dietrich`s, cadwork and hsbcad, our internal technical timber construction team develops waste-optimised detailed planning and determines the final nesting. In addition, the error-free execution plan is crucial for the production of the individual elements, i.e. the assembly sequence is defined and all information for the joinery services including levers has been created.

06

LOGISTICS PLANNING

Loading space optimisation (LRO) allows the correct order of the individual components to be determined virtually and in advance. Important logistics details are planned, such as the weight and package size, which type of truck will be used or the country-specific import requirements for container loading and customs clearance are defined.



Find out more about
loading space optimisation.

07

PRODUCTION

The modern, highly automated production facilities produce resource-saving glued laminated timber and CLTPLUS for modern timber construction.

CLTPLUS panel dimensions
Thickness 60-360 mm,
length 8-16 m,
Width 2.25-3.5 m
Grid dimensions: 225, 245-295,
310, 330 and 350 cm

Cross section of glue laminated
timber
Width 60-280 mm, length 6-18 m
Height 120-1280 mm



PERFECTLY PLANNED FROM A TO Z WITH CLTPLUS SPECIAL SOLUTIONS

509 m³ of wall and ceiling elements were produced for “City Office”, a good two thirds of which were supplied in Visual Quality. The ceilings were covered with 2,115 m² of weather protection film at the factory. The millimetre-precise CNC joinery of the wall and ceiling elements simplified the element connections during prefabrication and on the construction site, which was achieved using X-FIX connectors.

08

CUTTING

The individual components are processed with high dimensional accuracy and precise execution on the joinery machines on the basis of the approved work plans. This includes openings, milling, pre-fabrication for lifting equipment and much, much more.

09

PREFABRICATION

We create options and continually improve the refinement of our products. With our special solutions we can offer factory-assembled weather protection for the whole construction period, ribbed ceilings, X-FIX connections, stairs and key TS3 technology.

10

DELIVERY

To ensure smooth and just-in-time delivery to the construction site, a detailed logistics concept is drawn up in advance with the project partners. This includes, for example, coordinating time slots, access routes and obtaining permits. This ensures that nothing stands in the way of a smooth delivery.



Find out more about the
special solutions.

